



**EMBRC**  
EUROPEAN  
MARINE  
BIOLOGICAL  
RESOURCE  
CENTRE

# Assemble + (A+) – Kick Off meeting

## *Introduction*

**Ilaria Nardello**

October 2017

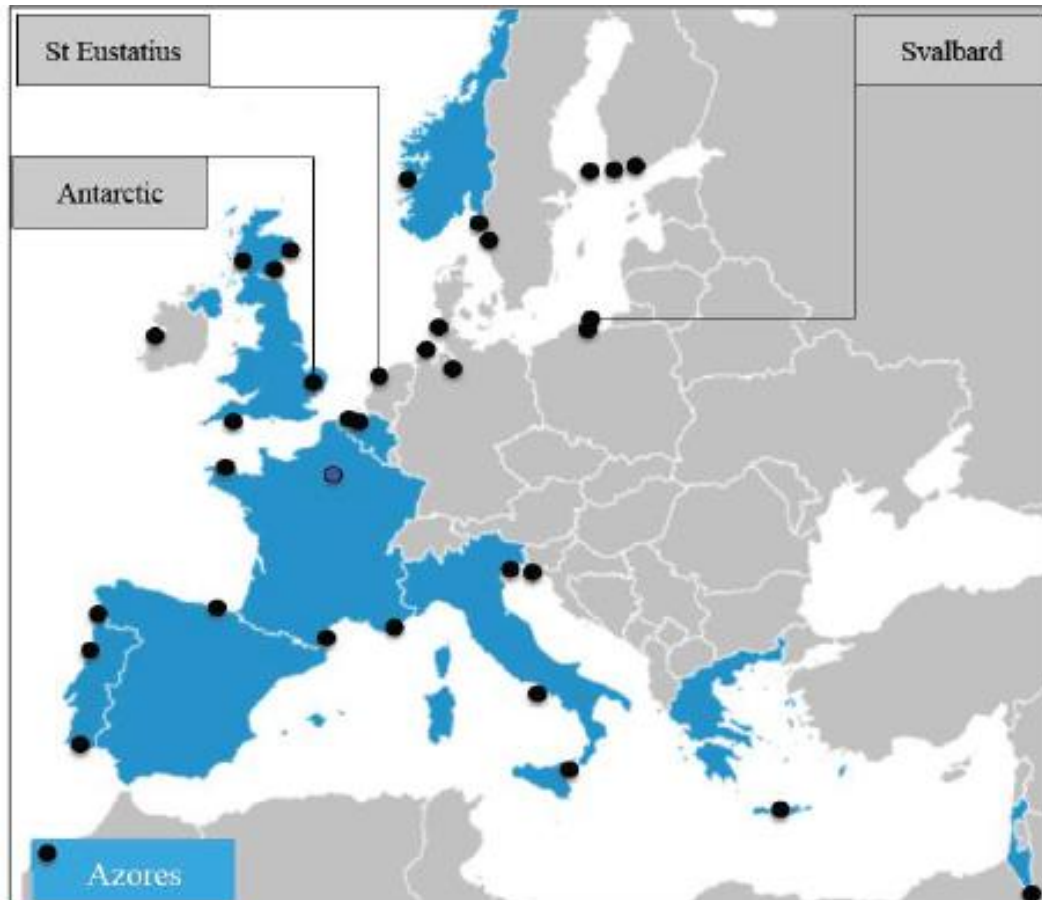
# Assemble + : Association of European Marine Biological Research Laboratories Expanded

- Call Identifier: H2020-INFRAIA-1-2016-2017 -Integrating Activities for Advanced Communities
- Type of Action: RIA Research and Innovation action
- Coordination: UPMC
- Scientific Coordinator (Ilaria Nardello, EMBRC Executive Director)
- Duration : 48 months from October 1st 2017

# Budget Allocation

- Budget : 10 M€
  - Management 10 % : 1 M€
  - Networking activities 15% : 1.5 M€
  - Joint Research Activities 25% : 2.5 M€
  - Trans-national Access system 50% : 5 M€

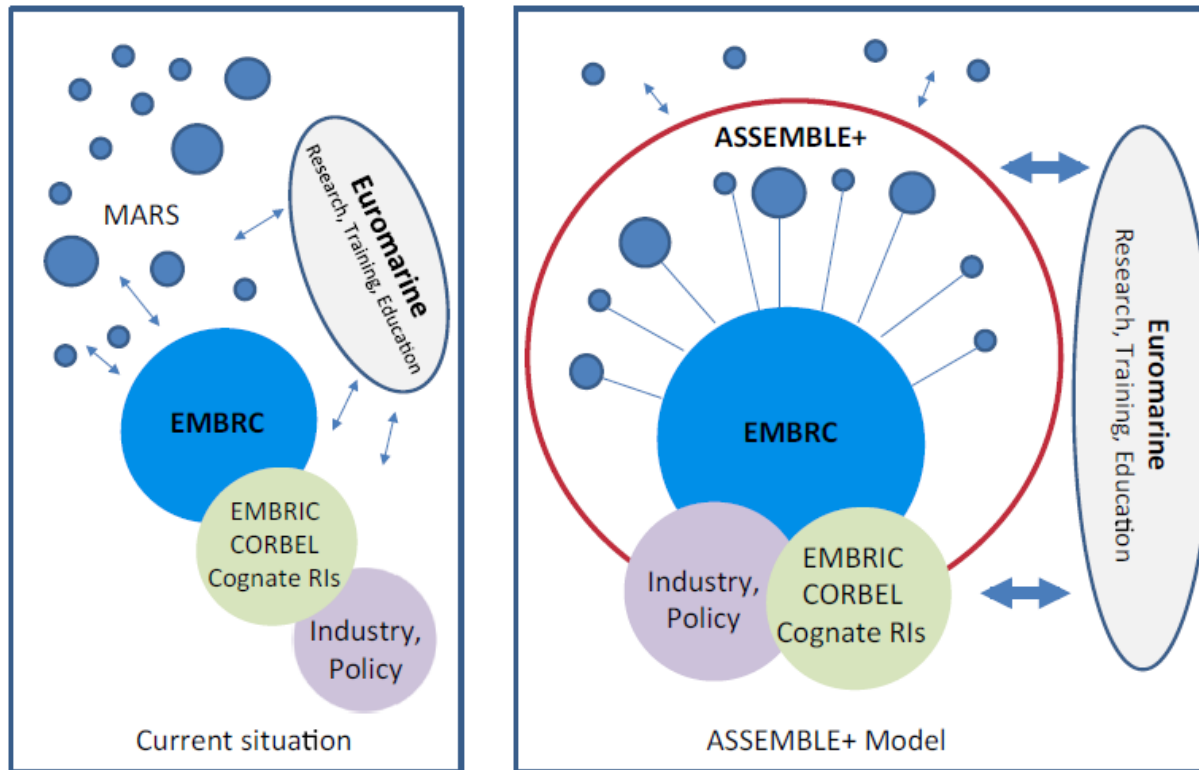
# Partners



- 32 marine stations in 16 countries
- 14 EU member states and 2 associated countries



# Impact of A+ on the marine biological RI landscape



➤ **A+ consolidates and expands EMBRC**

# EXPECTED IMPACTS

- ULTIMATE GOAL:

***IMPROVE THE LONG-TERM  
SUSTAINABILITY of marine stations***

# EXPECTED IMPACTS

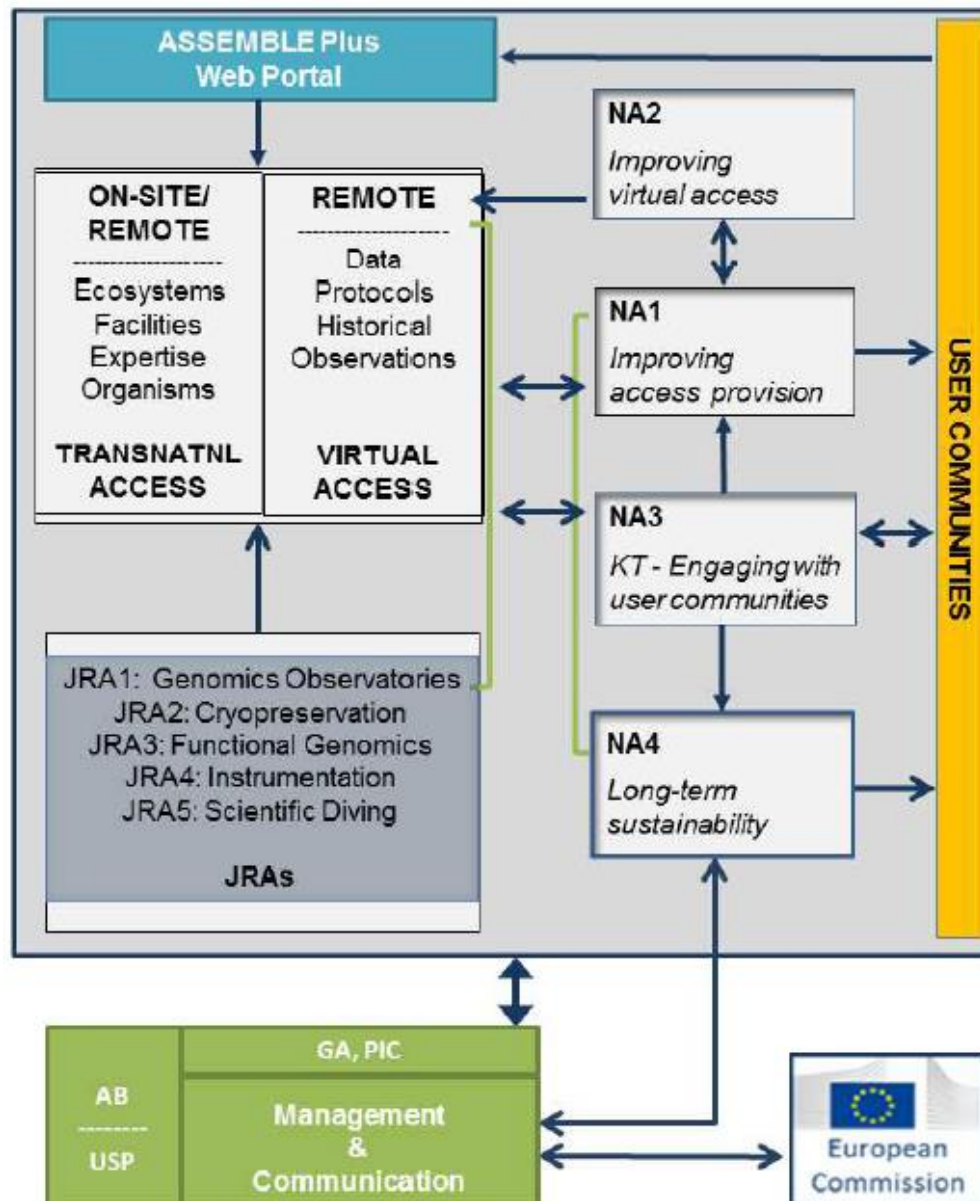
- Increasing number of excellent-science publications citing A+ & RIs
- Potentiating RI services with new enabling technologies for various applications
- Innovative public-private partnerships and products
- Stimulating new investments with new users

- Management and communication
- Improving access provision - NA1
- Focus on enhanced access to data - NA2
- Interconnection of research and industry - NA3
- Foresight studies and Sustainability Plans NA3 and NA4
- Joint development of new services
  - A+ Genomic Observatories JRA1
  - Cryobanking of marine organisms JRA2
  - Functional genomics of marine organisms JRA3
  - Instrumentation for experimental marine biology and ecology JRA4
  - Emerging technologies to improve diving-based science delivery JRA5
- Trans-national Access TA1-20
- Virtual Access



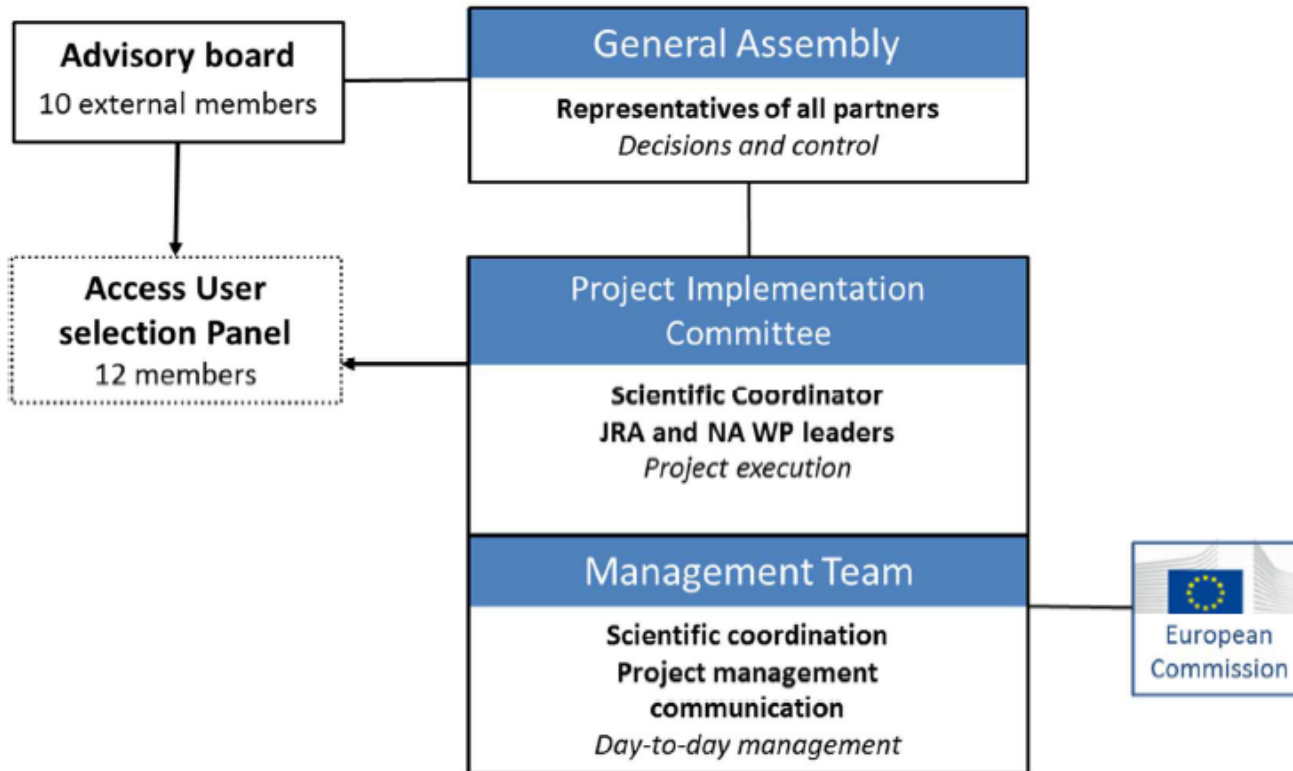


# A+ activities and interrelationship





# Governance





**EMBRC**  
EUROPEAN  
MARINE  
BIOLOGICAL  
RESOURCE  
CENTRE

**Thank you for your attention !**